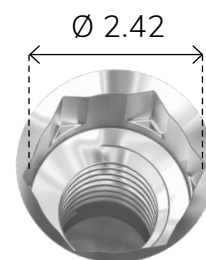
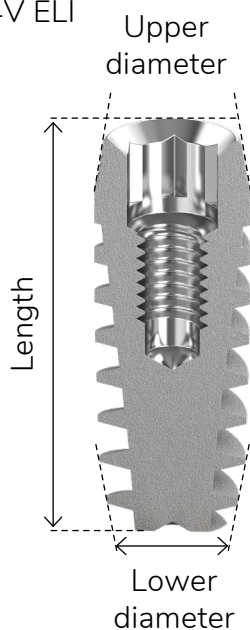
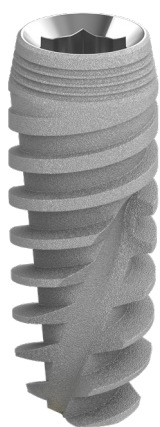


# Internal Hex | SPTT

**Biotec SPTT** implants share the same three-thread zone concept as SPR implants but they also incorporate platform switching in their design, which keeps the implant-abutment connection away from the bone, minimizes bone resorption and allows for more vital growth of the soft tissue.

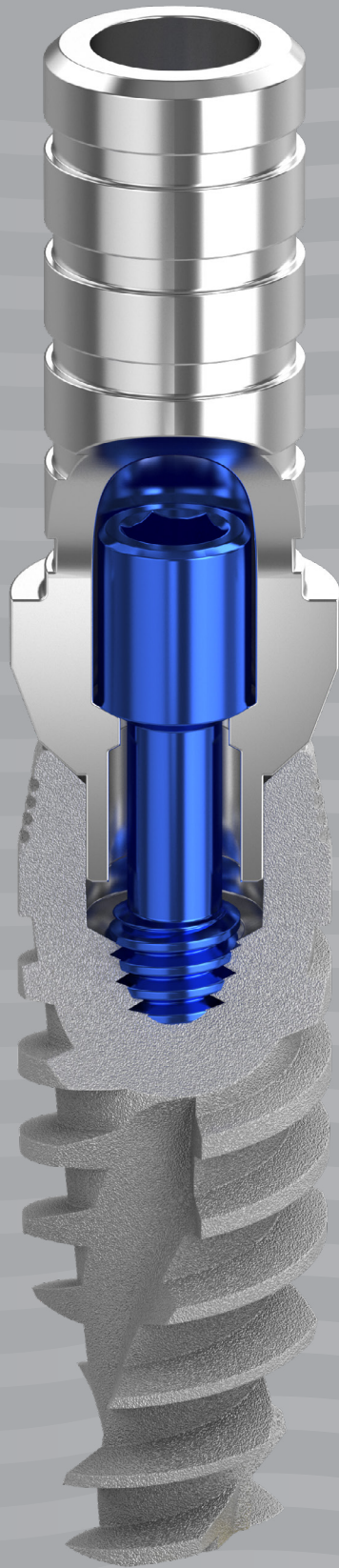


**Material** Titanium Alloy - Ti 6Al 4V ELI



## Why choose Biotec SPTT implants?

- Platform switching – keeps implant-abutment connection away from the bone and minimizes bone resorption
- Improved cutting ability
- Better bone-to-implant contact for better primary stability
- Exceptional solution for immediate placement and loading
- Fast insertion
- Self-tapping
- Bone condensing
- RBM surface treatment enhances soft tissue integration and stabilizes crestal bone



# Internal Hex | SPTT

## SPTT Ø 4.2 mm

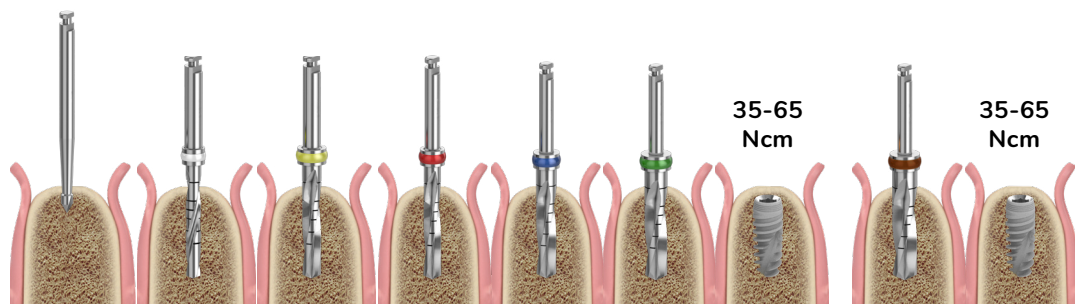
Upper Diameter  
Ø 4.2 mm

Lower Diameter  
Ø 3.3 mm

Length	Catalog Number
6 mm	Bio-SPTT4306
8 mm	Bio-SPTT4308
10 mm	Bio-SPTT4310
11.5 mm	Bio-SPTT4311
13 mm	Bio-SPTT4313
16 mm	Bio-SPTT4316

### Soft Bone (D3, D4)

### Hard Bone (D1, D2)



<b>Diameter (mm)</b>	Ø 1.9	Ø 2.0	Ø 2.5	Ø 2.8	Ø 3.2	Ø 3.65	Ø 4.2	Ø 4.0	Ø 4.2
<b>Drill Speed (rpm)</b>	1200-1500	900-1200	500-700	500-700	500-700	500-700		500-700	

\* Recommended insertion torque 35-60 Ncm

\* Procedure recommended by Biotec Implant Systems GmbH.  
Dental professionals should exercise their own judgment in each case.

# Internal Hex | SPTT

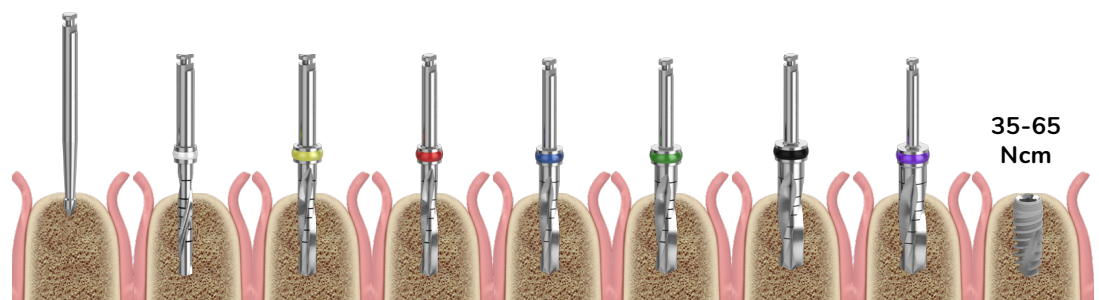
## SPTT Ø 5.0 mm

Upper Diameter  
Ø 5.0 mm

Lower Diameter  
Ø 4.1 mm

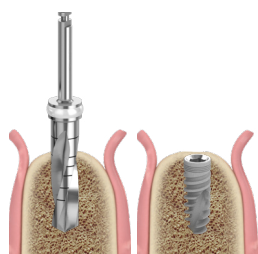
Length	Catalog Number
6 mm	Bio-SPTT5106
8 mm	Bio-SPTT5108
10 mm	Bio-SPTT5110
11.5 mm	Bio-SPTT5111
13 mm	Bio-SPTT5113
16 mm	Bio-SPTT5116

### Soft Bone (D3, D4)



<b>Diameter (mm)</b>	Ø 1.9	Ø 2.0	Ø 2.5	Ø 2.8	Ø 3.2	Ø 3.65	Ø 4.2	Ø 4.5	Ø 5.0
<b>Drill Speed (rpm)</b>	1200-1500	900-1200	500-700	500-700	500-700	500-700	500-700	500-700	35-65 Ncm

### Hard Bone (D1, D2)



<b>Diameter (mm)</b>	Ø 4.8	Ø 5.0
<b>Drill Speed (rpm)</b>	500-700	

\* Recommended insertion torque 35-60 Ncm

\* Procedure recommended by Biotec Implant Systems GmbH. Dental professionals should exercise their own judgment in each case.

# Internal Hex | SPTT

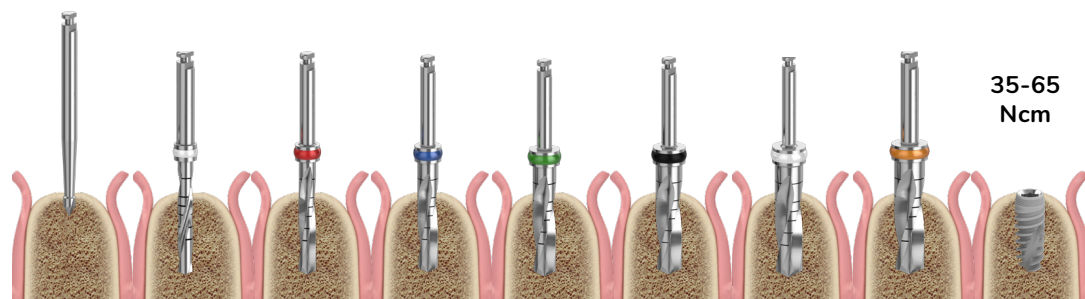
## SPTT Ø 6.0 mm

Upper Diameter  
Ø 6.0 mm

Lower Diameter  
Ø 5.1 mm

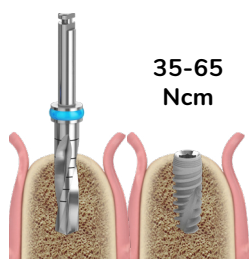
Length	Catalog Number
6 mm	Bio-SPTT6106
8 mm	Bio-SPTT6108
10 mm	Bio-SPTT6110
11.5 mm	Bio-SPTT6111
13 mm	Bio-SPTT6113

### Soft Bone (D3, D4)



<b>Diameter (mm)</b>	Ø 1.9	Ø 2.0	Ø 2.8	Ø 3.2	Ø 3.65	Ø 4.2	Ø 4.8	Ø 5.2	Ø 6.0
<b>Drill Speed (rpm)</b>	1200-1500	900-1200	500-700	500-700	500-700	500-700	500-700	500-700	500-700

### Hard Bone (D1, D2)



<b>Diameter (mm)</b>	Ø 5.8	Ø 6.0
<b>Drill Speed (rpm)</b>	500-700	500-700

\* Recommended insertion torque 35-60 Ncm

\* Procedure recommended by Biotec Implant Systems GmbH. Dental professionals should exercise their own judgment in each case.

