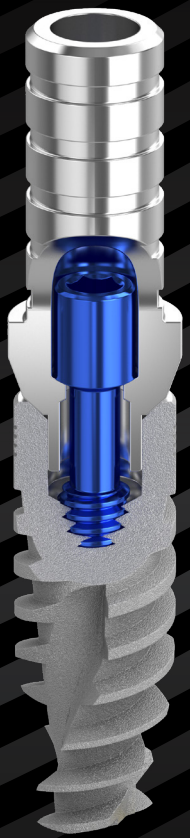
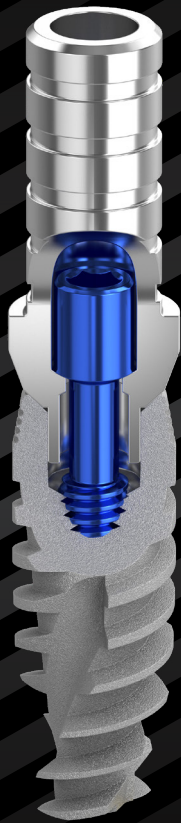


# INTERNAL HEX

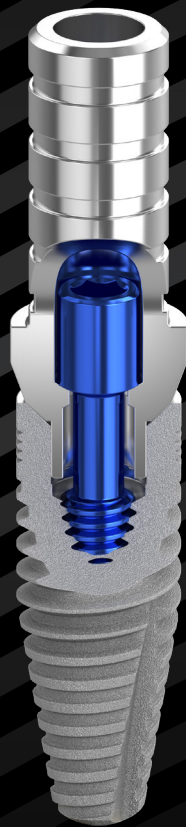
Biotec internal hex connection implants offer the perfect fit between the implant and the abutment, and are designed and developed to meet the highest standards of safety, functionality and aesthetics. Our portfolio covers almost every clinical case – from the most simple to the most complex. This is to ensure that every dental surgeon finds the most accurate and convenient implant with which to work and achieve the best results for patients.



SPR



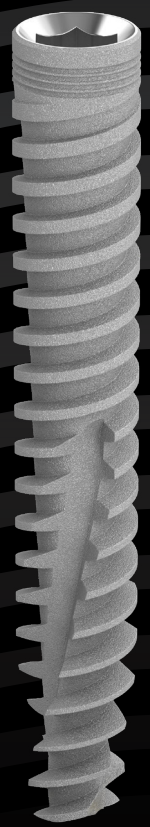
SPTT



CIM



Zygomatic



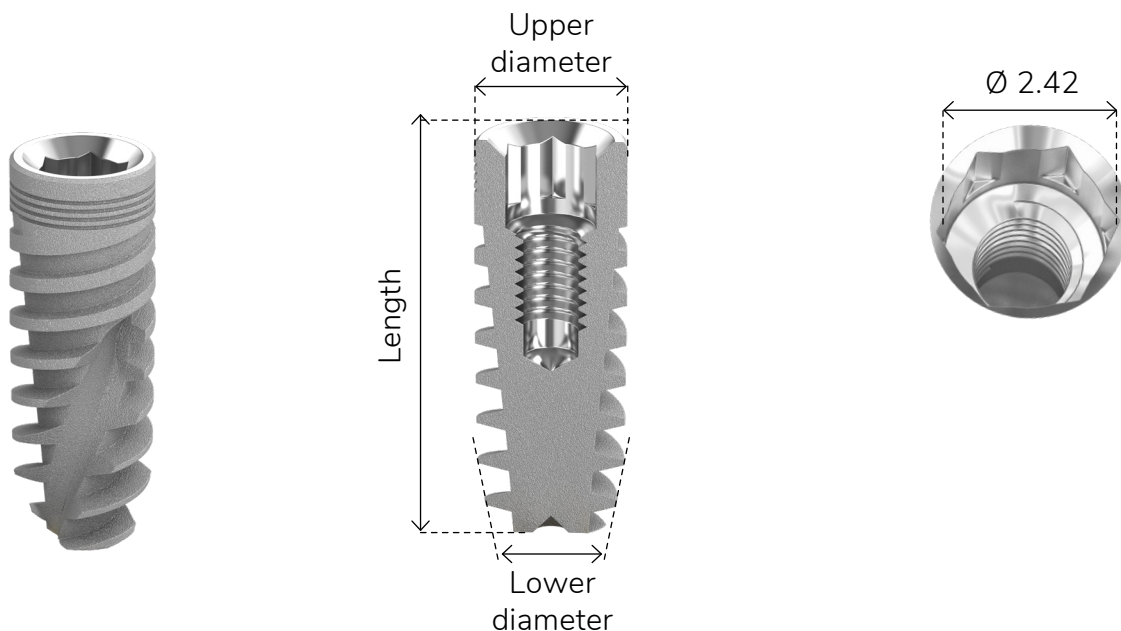
Pterygoid

# Internal Hex | SPR

**Biotec SPR** implants are spiral-tapered implants with sharp threads and a pronounced tapered core that have been uniquely designed with sharper cutting flutes to slice through and widen the bone gradually.

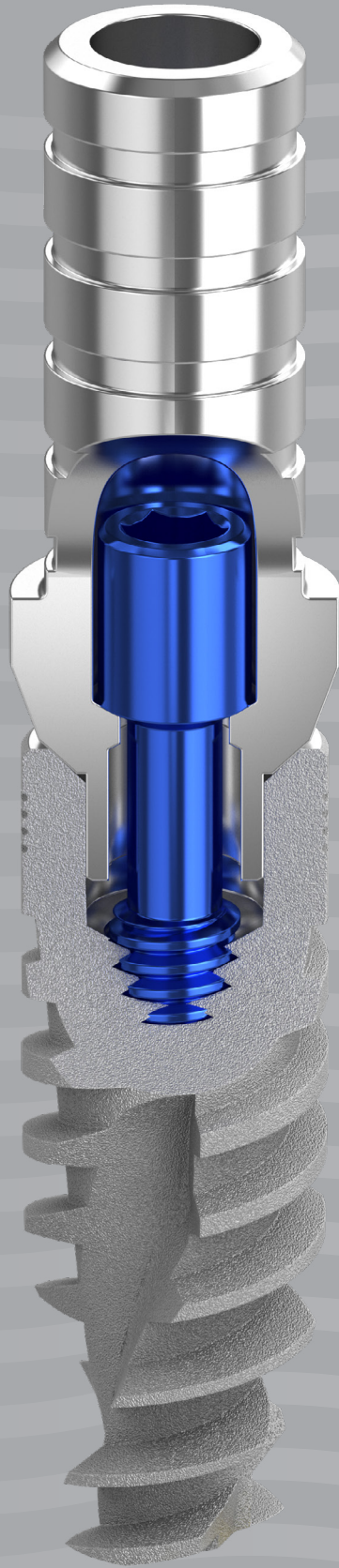


**Material** Titanium Alloy - Ti 6Al 4V ELI



## Why choose Biotec SPR implants?

- Minimize micro movement and reduce bone resorption
- Improved cutting ability
- Better bone-to-implant contact for better primary stability
- Exceptional solution for immediate placement and loading
- Fast insertion
- Self-tapping
- Bone condensing
- RBM surface treatment enhances soft tissue integration and stabilizes crestal bone



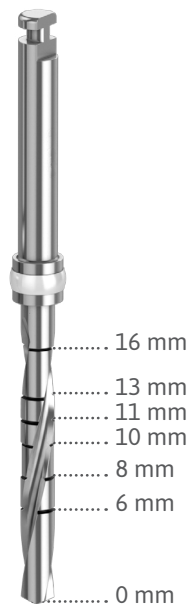
# Internal Hex | **SPR**

## SPR Ø 3.3 mm

Upper Diameter  
Ø 3.3 mm

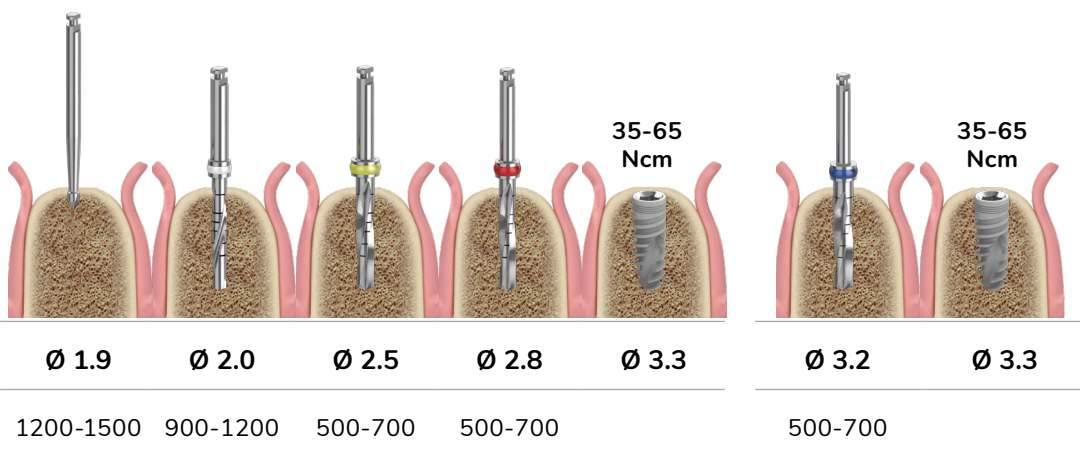
Lower Diameter  
Ø 2.8 mm

Length	Catalog Number
8 mm	Bio-SPR3308
10 mm	Bio-SPR3310
11.5 mm	Bio-SPR3311
13 mm	Bio-SPR3313
16 mm	Bio-SPR3316



### Soft Bone (D3, D4)

### Hard Bone (D1, D2)



\* Recommended insertion torque 35-60 Ncm

\* Procedure recommended by Biotec Implant Systems GmbH.  
Dental professionals should exercise their own judgment in each case.

# Internal Hex | SPR

## SPR Ø 3.75 mm

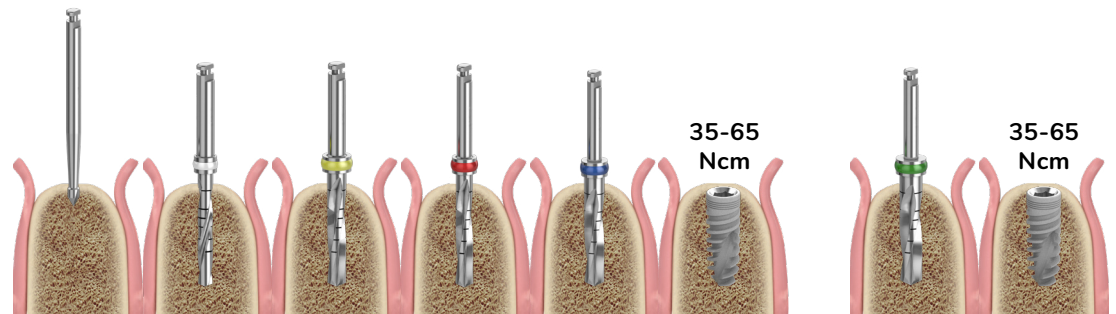
Upper Diameter  
Ø 3.75 mm

Lower Diameter  
Ø 2.9 mm

Length	Catalog Number
6 mm	Bio-SPR3706
8 mm	Bio-SPR3708
10 mm	Bio-SPR3710
11.5 mm	Bio-SPR3711
13 mm	Bio-SPR3713
16 mm	Bio-SPR3716

### Soft Bone (D3, D4)

### Hard Bone (D1, D2)



<b>Diameter (mm)</b>	Ø 1.9	Ø 2.0	Ø 2.5	Ø 2.8	Ø 3.2	Ø 3.75	Ø 3.65	Ø 3.75
<b>Drill Speed (rpm)</b>	1200-1500	900-1200	500-700	500-700	500-700	500-700	500-700	500-700

\* Recommended insertion torque 35-60 Ncm

\* Procedure recommended by Biotec Implant Systems GmbH.  
Dental professionals should exercise their own judgment in each case.

# Internal Hex | SPR

## SPR Ø 4.2 mm

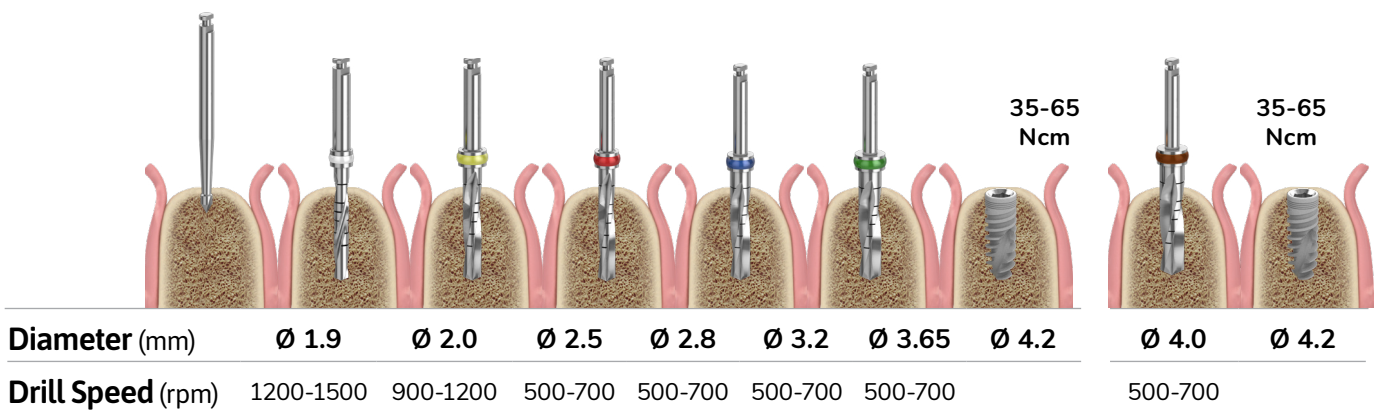
Upper Diameter  
Ø 4.2 mm

Lower Diameter  
Ø 3.3 mm

Length	Catalog Number
6 mm	Bio-SPR4206
8 mm	Bio-SPR4208
10 mm	Bio-SPR4210
11.5 mm	Bio-SPR4211
13 mm	Bio-SPR4213
16 mm	Bio-SPR4216

### Soft Bone (D3, D4)

### Hard Bone (D1, D2)



\* Recommended insertion torque 35-60 Ncm

\* Procedure recommended by Biotec Implant Systems GmbH.  
Dental professionals should exercise their own judgment in each case.

# Internal Hex | SPR

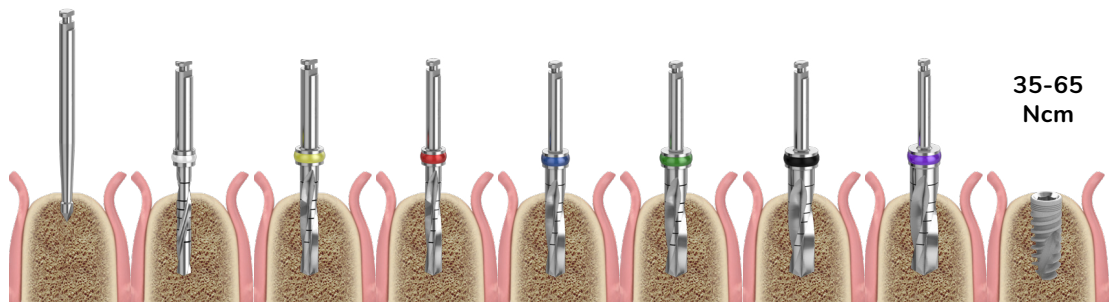
## SPR Ø 5.0 mm

Upper Diameter  
Ø 5.0 mm

Lower Diameter  
Ø 4.1 mm

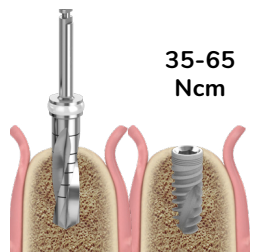
Length	Catalog Number
6 mm	Bio-SPR5006
8 mm	Bio-SPR5008
10 mm	Bio-SPR5010
11.5 mm	Bio-SPR5011
13 mm	Bio-SPR5013
16 mm	Bio-SPR5016

### Soft Bone (D3, D4)



<b>Diameter (mm)</b>	Ø 1.9	Ø 2.0	Ø 2.5	Ø 2.8	Ø 3.2	Ø 3.65	Ø 4.2	Ø 4.5	Ø 5.0
<b>Drill Speed (rpm)</b>	1200-1500	900-1200	500-700	500-700	500-700	500-700	500-700	500-700	500-700

### Hard Bone (D1, D2)



<b>Diameter (mm)</b>	Ø 4.8	Ø 5.0
<b>Drill Speed (rpm)</b>	500-700	

\* Recommended insertion torque 35-60 Ncm

\* Procedure recommended by Biotec Implant Systems GmbH. Dental professionals should exercise their own judgment in each case.



# Internal Hex | SPR

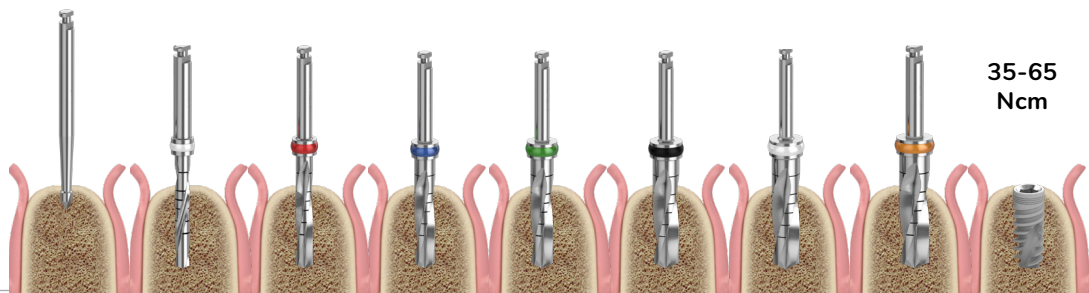
## SPR Ø 6.0 mm

Upper Diameter  
Ø 6.0 mm

Lower Diameter  
Ø 5.1 mm

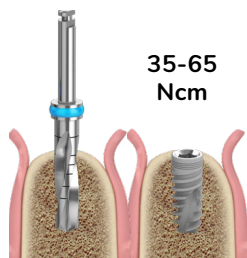
Length	Catalog Number
6 mm	Bio-SPR6006
8 mm	Bio-SPR6008
10 mm	Bio-SPR6010
11.5 mm	Bio-SPR6011
13 mm	Bio-SPR6013

### Soft Bone (D3, D4)



<b>Diameter (mm)</b>	Ø 1.9	Ø 2.0	Ø 2.8	Ø 3.2	Ø 3.65	Ø 4.2	Ø 4.8	Ø 5.2	Ø 6.0
<b>Drill Speed (rpm)</b>	1200-1500	900-1200	500-700	500-700	500-700	500-700	500-700	500-700	500-700

### Hard Bone (D1, D2)



<b>Diameter (mm)</b>	Ø 5.8	Ø 6.0
<b>Drill Speed (rpm)</b>	500-700	500-700

- \* Recommended insertion torque 35-60 Ncm
- \* Procedure recommended by Biotec Implant Systems GmbH. Dental professionals should exercise their own judgment in each case.

