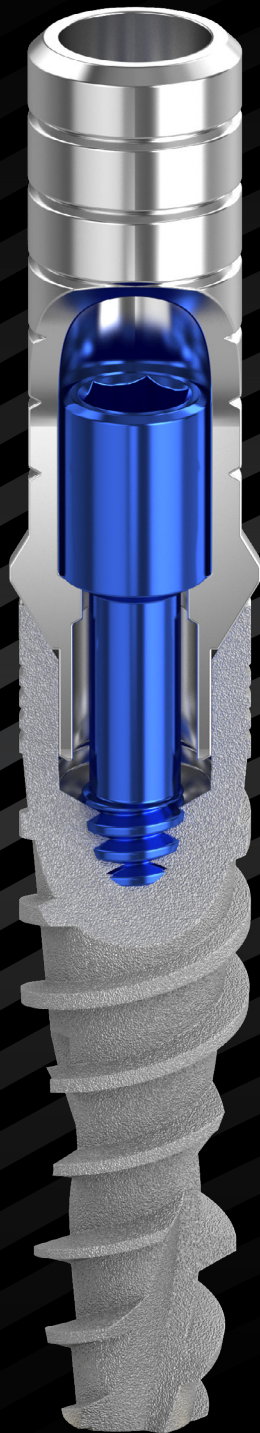


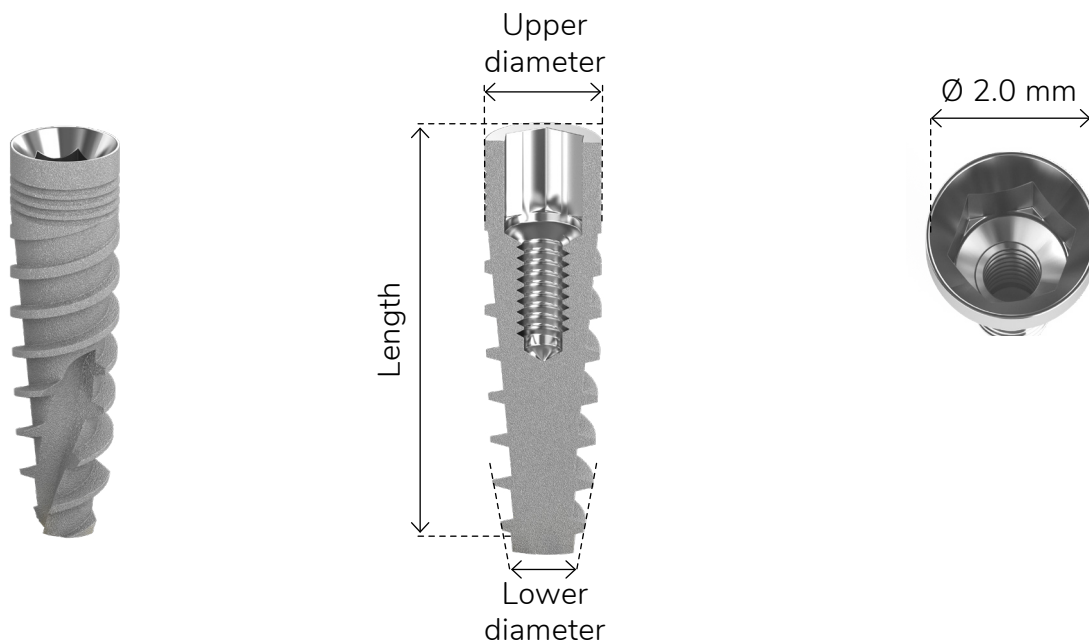
INTERNAL HEX 2.0 | S1



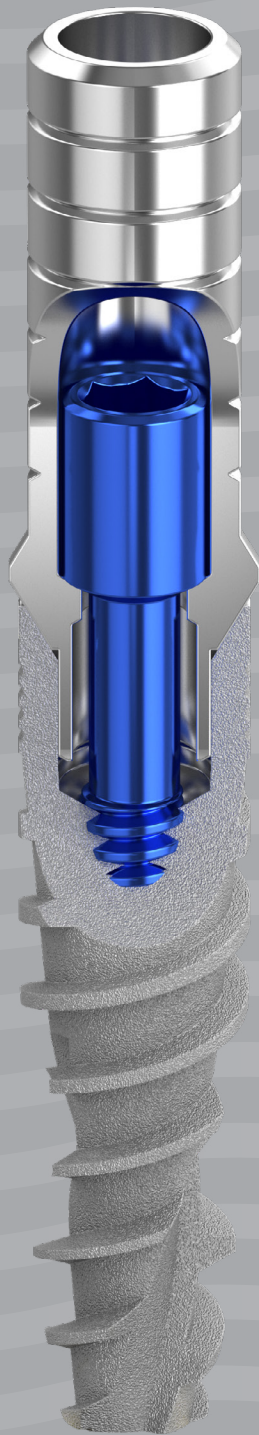
Internal Hex 2.0 | S1

Biotec narrow implants systems are designed for narrow alveolar ridges in cases where the bone space is too limited to use internal hex implants, or the space between two adjacent teeth is too narrow for a standard abutment restoration.

Material Titanium Alloy - Ti 6Al 4V ELI



These implants are unique as they are transgingival implants, that is, they can be placed at bone level or below.



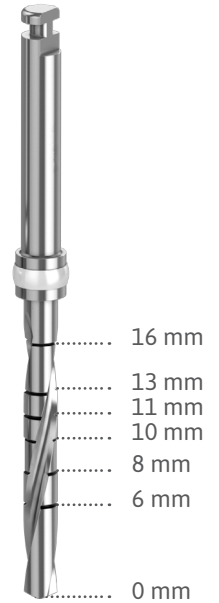
Internal Hex 2.0 | S1

S1 Ø 3.0 mm

Upper Diameter
Ø 3.0 mm

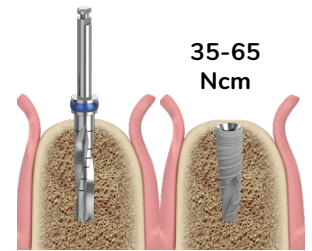
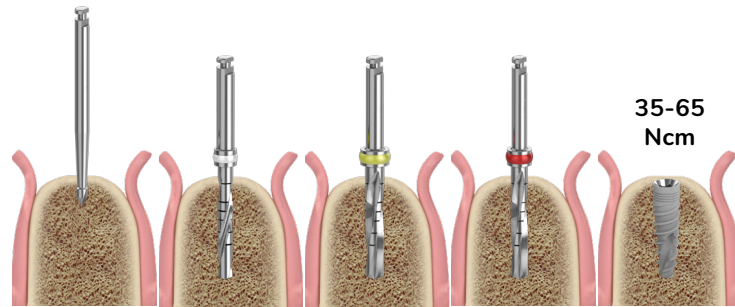
Lower Diameter
Ø 1.94 mm

Length	Catalog Number
10 mm	Bio-N3010
11.5 mm	Bio-N3011
13 mm	Bio-N3013
16 mm	Bio-N3016



Soft Bone (D3, D4)

Hard Bone (D1, D2)



Diameter (mm)	Ø 1.9	Ø 2.0	Ø 2.5	Ø 2.8	Ø 3.3
Drill Speed (rpm)	1200-1500	900-1200	500-700	500-700	35-65 Ncm

Diameter (mm)	Ø 3.2	Ø 3.3
Drill Speed (rpm)	35-65 Ncm	35-65 Ncm

* Recommended insertion torque 35-60 Ncm

* Procedure recommended by Biotec Implant Systems GmbH.
Dental professionals should exercise their own judgment in each case.

