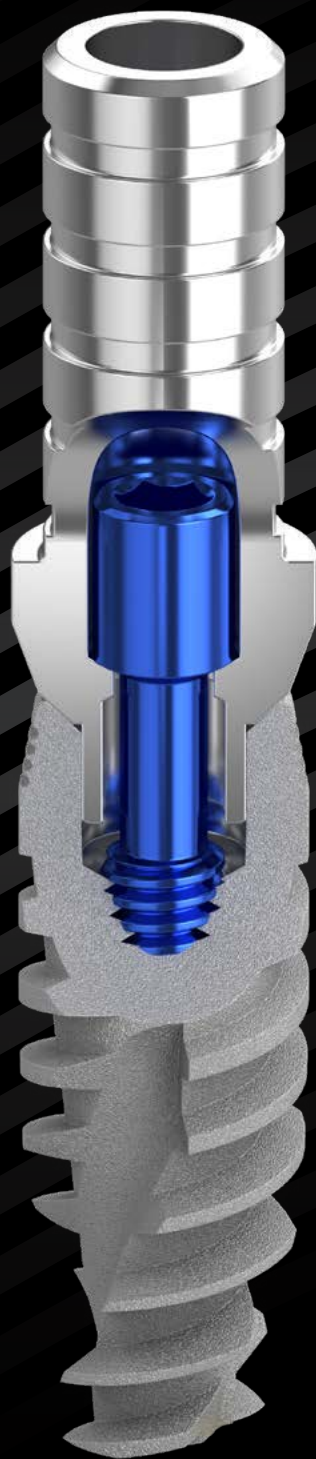


INTERNAL HEX SPTT

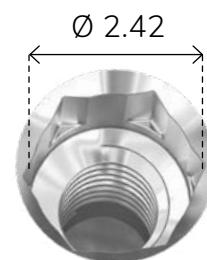
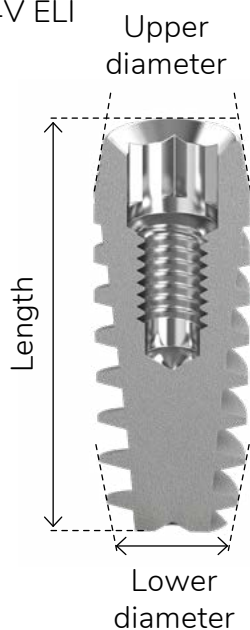


Internal Hex | SPTT

BiotecSPTT implants share the same three-thread zone concept as SPR implants but they also incorporate platform switching in their design, which keeps the implant-abutment connection away from the bone, minimizes bone resorption and allows for more vital growth of the soft tissue.



Material Titanium Alloy - Ti 6Al 4V ELI



Why choose BiotecSPTT implants?

- Platform switching – keeps implant-abutment connection away from the bone and minimizes bone resorption
- Improved cutting ability
- Better bone-to-implant contact for better primary stability
- Exceptional solution for immediate placement and loading
- Fast insertion
- Self-tapping
- Bone condensing
- RBM surface treatment enhances soft tissue integration and stabilizes crestal bone

Internal Hex | SPTT

SPTT Ø 4.2 mm

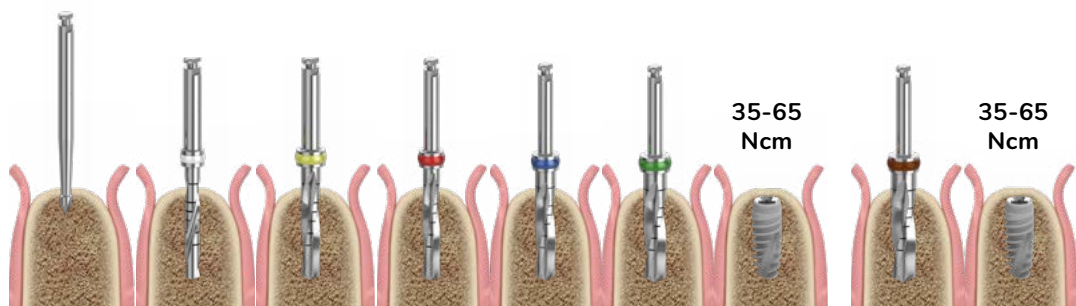
Upper Diameter
Ø 4.2 mm

Lower Diameter
Ø 3.3 mm

Length	Catalog Number
6 mm	Bio-SPTT4306
8 mm	Bio-SPTT4308
10 mm	Bio-SPTT4310
11.5 mm	Bio-SPTT4311
13 mm	Bio-SPTT4313
16 mm	Bio-SPTT4316

Soft Bone (D3, D4)

Hard Bone (D1, D2)



Diameter (mm)	Ø 1.9	Ø 2.0	Ø 2.5	Ø 2.8	Ø 3.2	Ø 3.65	Ø 4.2	Ø 4.0	Ø 4.2
Drill Speed (rpm)	1200-1500	900-1200	500-700	500-700	500-700	500-700		500-700	

* Recommended insertion torque 35-60 Ncm

* Procedure recommended by Biotec Implant Systems GmbH.
Dental professionals should exercise their own judgment in each case.

Internal Hex | SPTT

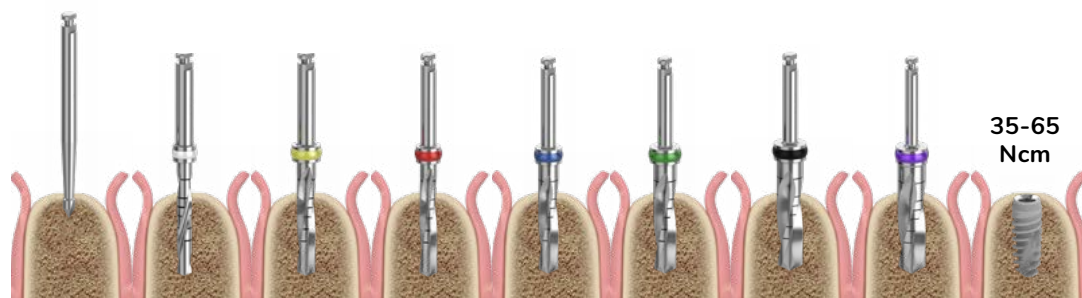
SPTT Ø 5.0 mm

Upper Diameter
Ø 5.0 mm

Lower Diameter
Ø 4.1 mm

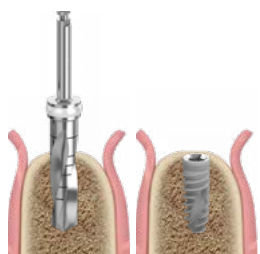
Length	Catalog Number
6 mm	Bio-SPTT5106
8 mm	Bio-SPTT5108
10 mm	Bio-SPTT5110
11.5 mm	Bio-SPTT5111
13 mm	Bio-SPTT5113
16 mm	Bio-SPTT5116

Soft Bone (D3, D4)



Diameter (mm)	Ø 1.9	Ø 2.0	Ø 2.5	Ø 2.8	Ø 3.2	Ø 3.65	Ø 4.2	Ø 4.5	Ø 5.0
Drill Speed (rpm)	1200-1500	900-1200	500-700	500-700	500-700	500-700	500-700	500-700	500-700

Hard Bone (D1, D2)



Diameter (mm)	Ø 4.8	Ø 5.0
Drill Speed (rpm)	500-700	

* Recommended insertion torque 35-60 Ncm

* Procedure recommended by Biotec Implant Systems GmbH. Dental professionals should exercise their own judgment in each case.

Internal Hex | SPTT

SPTT Ø 6.0 mm

Upper Diameter
Ø 6.0 mm

Lower Diameter
Ø 5.1 mm

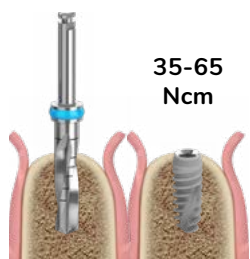
Length	Catalog Number
6 mm	Bio-SPTT6106
8 mm	Bio-SPTT6108
10 mm	Bio-SPTT6110
11.5 mm	Bio-SPTT6111
13 mm	Bio-SPTT6113

Soft Bone (D3, D4)



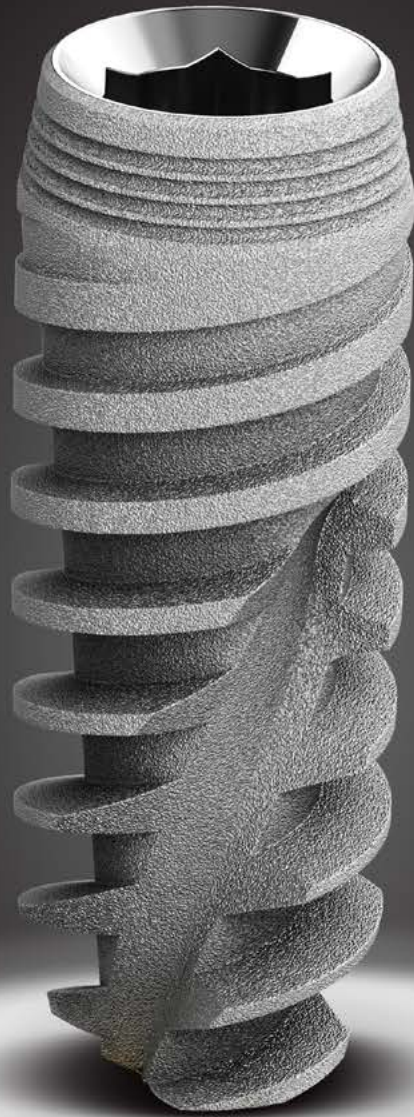
Diameter (mm)	Ø 1.9	Ø 2.0	Ø 2.8	Ø 3.2	Ø 3.65	Ø 4.2	Ø 4.8	Ø 5.2	Ø 6.0
Drill Speed (rpm)	1200-1500	900-1200	500-700	500-700	500-700	500-700	500-700	500-700	500-700

Hard Bone (D1, D2)



Diameter (mm)	Ø 5.8	Ø 6.0
Drill Speed (rpm)	500-700	

- * Recommended insertion torque 35-60 Ncm
- * Procedure recommended by Biotec Implant Systems GmbH. Dental professionals should exercise their own judgment in each case.





info@biotec-implant.com
T. +49.6196.6521096
biotec-implant.com

Franzgraben 6,
34125 Kassel,
Germany

www.biotec-implant.com