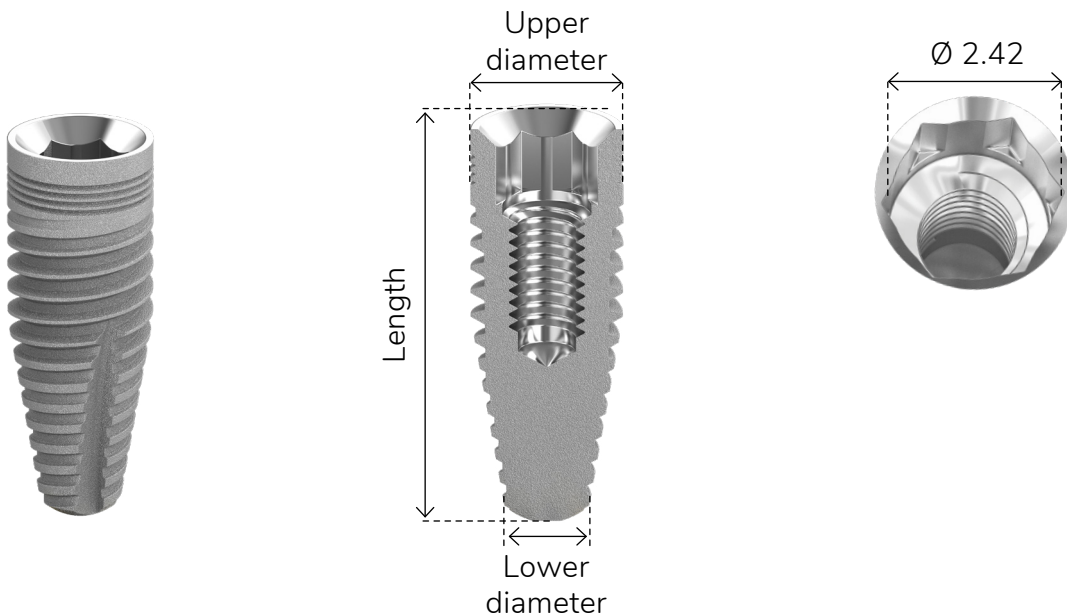


Internal Hex | **CIM**

Biotec CIM implants are tapered implants with an internal hex connection that mimic the shape of the natural tooth root and are designed for high initial stability. They perform well in a wide range of indications, including soft and hard bone, flapless and flapped procedures, single and double-stage surgical protocols and immediate and delayed procedures.

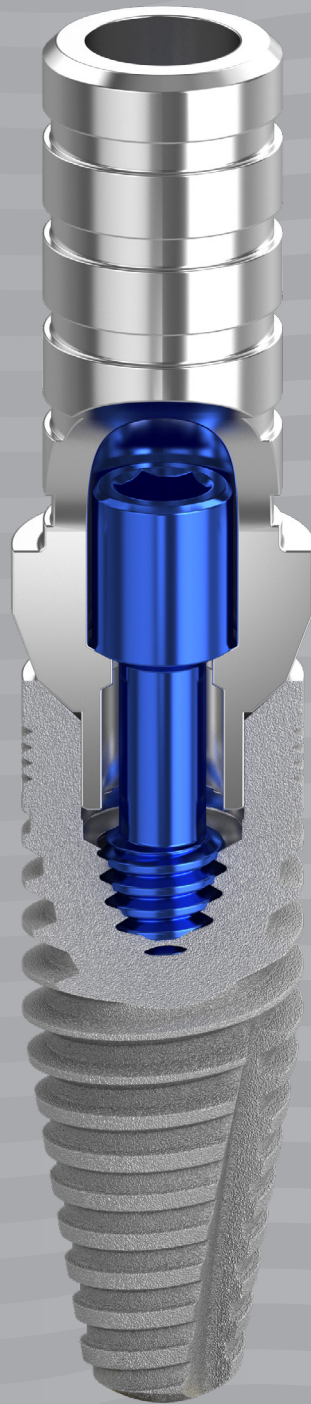


Material Titanium Alloy - Ti 6Al 4V ELI



Why choose Biotec CIM implants?

- Suit a wide range of bone types and bone augmentation procedures
- Micro rings on the implant's neck improve the shear strength in the crest zone
- Designed for mild-bone compression
- Facilitate the insertion of an undersized socket
- Achieve maximum initial and long-term stability in compromised cases
- Standardized, step-by-step tapered drilling protocol simplifies site preparation and ensures predictable outcomes in all situations
- RBM surface treatment enhances soft tissue integration and stabilizes crestal bone



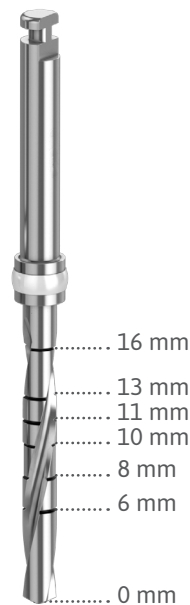
Internal Hex | **CIM**

CIM Ø 3.3 mm

Upper Diameter
Ø 3.3 mm

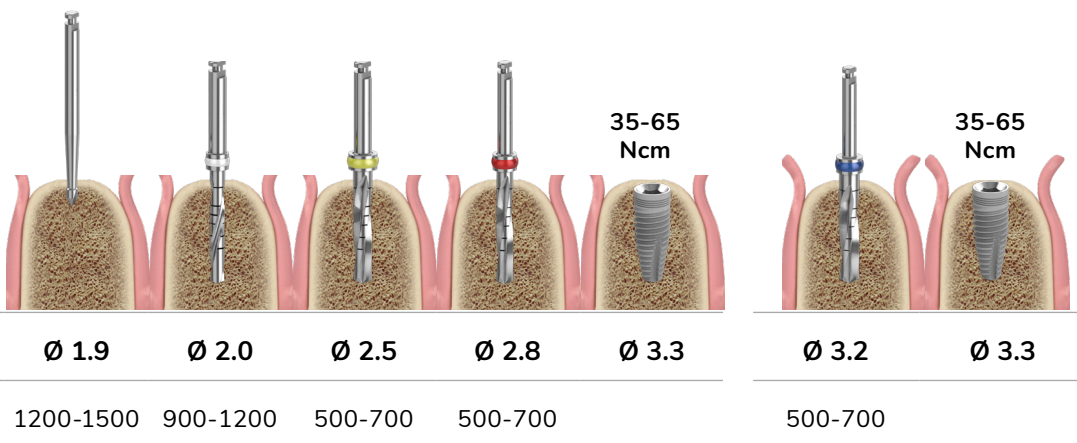
Lower Diameter
Ø 1.8 mm

Length	Catalog Number
8 mm	Bio-CIM3308
10 mm	Bio-CIM3310
11.5 mm	Bio-CIM3311
13 mm	Bio-CIM3313
16 mm	Bio-CIM3316



Soft Bone (D3, D4)

Hard Bone (D1, D2)



* Recommended insertion torque 35-60 Ncm

* Procedure recommended by Biotec Implant Systems GmbH.
Dental professionals should exercise their own judgment in each case.

Internal Hex | **CIM**

CIM Ø 3.75 mm

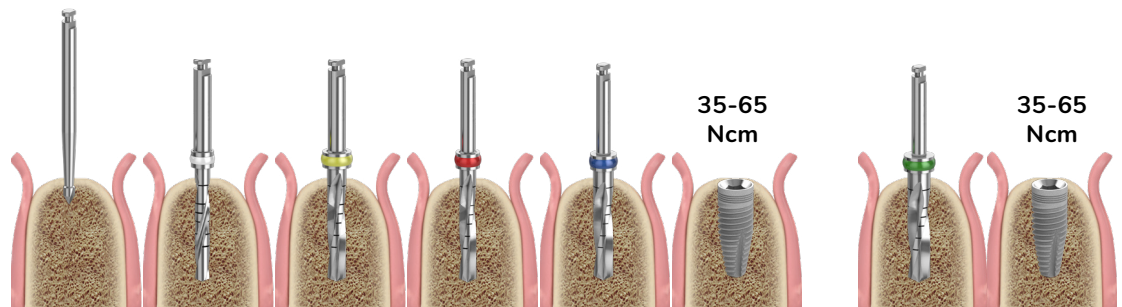
Upper Diameter
Ø 3.75 mm

Lower Diameter
Ø 1.8 mm

Length	Catalog Number
8 mm	Bio-CIM3708
10 mm	Bio-CIM3710
11.5 mm	Bio-CIM3711
13 mm	Bio-CIM3713
16 mm	Bio-CIM3716

Soft Bone (D3,D4)

Hard Bone (D1,D2)



Diameter (mm)	Ø 1.9	Ø 2.0	Ø 2.5	Ø 2.8	Ø 3.2	Ø 3.75	Ø 3.65	Ø 3.75
Drill Speed (rpm)	1200-1500	900-1200	500-700	500-700	500-700		500-700	

* Recommended insertion torque 35-60 Ncm

* Procedure recommended by Biotec Implant Systems GmbH.
Dental professionals should exercise their own judgment in each case.

Internal Hex | **CIM**

CIM Ø 4.2 mm

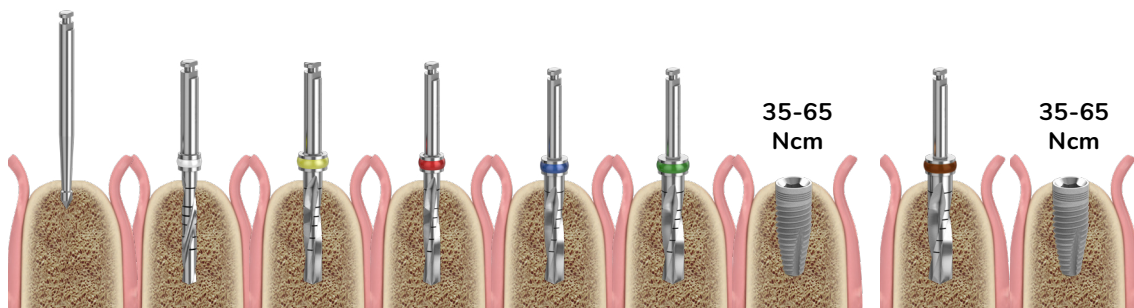
Upper Diameter
Ø 4.2 mm

Lower Diameter
Ø 2.35 mm

Length	Catalog Number
6 mm	Bio-CIM4206
8 mm	Bio-CIM4208
10 mm	Bio-CIM4210
11.5 mm	Bio-CIM4211
13 mm	Bio-CIM4213
16 mm	Bio-CIM4216

Soft Bone (D3, D4)

Hard Bone (D1, D2)



Diameter (mm)	Ø 1.9	Ø 2.0	Ø 2.5	Ø 2.8	Ø 3.2	Ø 3.65	Ø 4.2	Ø 4.0	Ø 4.2
Drill Speed (rpm)	1200-1500	900-1200	500-700	500-700	500-700	500-700		500-700	

* Recommended insertion torque 35-60 Ncm

* Procedure recommended by Biotec Implant Systems GmbH.
Dental professionals should exercise their own judgment in each case.

Internal Hex | **CIM**

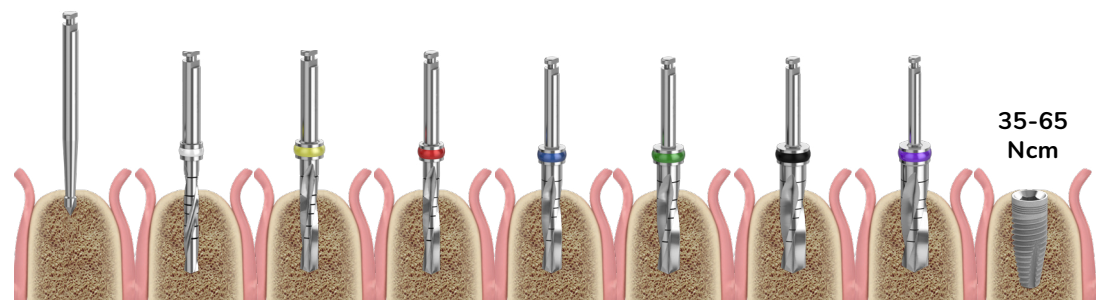
CIM Ø 5.0 mm

Upper Diameter
Ø 5.0 mm

Lower Diameter
Ø 2.8 mm

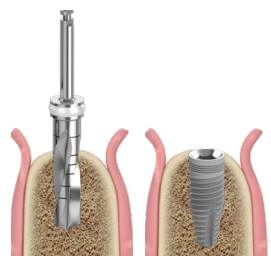
Length	Catalog Number
6 mm	Bio-CIM5006
8 mm	Bio-CIM5008
10 mm	Bio-CIM5010
11.5 mm	Bio-CIM5011
13 mm	Bio-CIM5013
16 mm	Bio-CIM5016

Soft Bone (D3, D4)



Diameter (mm)	Ø 1.9	Ø 2.0	Ø 2.5	Ø 2.8	Ø 3.2	Ø 3.65	Ø 4.2	Ø 4.5	Ø 5.0
Drill Speed (rpm)	1200-1500	900-1200	500-700	500-700	500-700	500-700	500-700	500-700	35-65 Ncm

Hard Bone (D1, D2)



Diameter (mm)	Ø 4.8	Ø 5.0
Drill Speed (rpm)	500-700	

* Recommended insertion torque 35-60 Ncm

* Procedure recommended by Biotec Implant Systems GmbH. Dental professionals should exercise their own judgment in each case.

Internal Hex | **CIM**

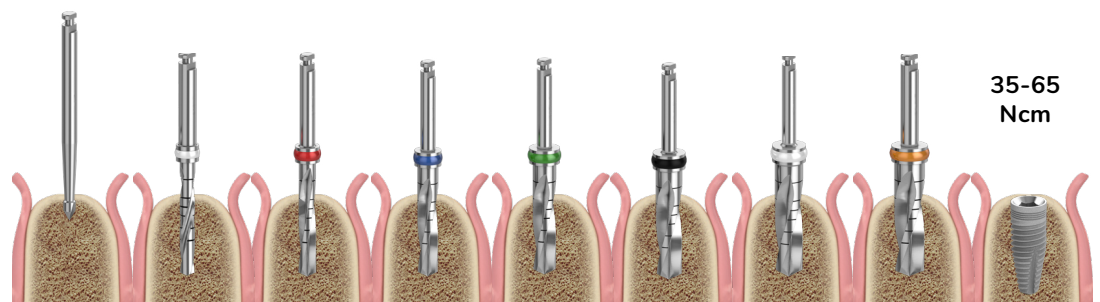
CIM Ø 6.0 mm

Upper Diameter
Ø 6.0 mm

Lower Diameter
Ø 3.5 mm

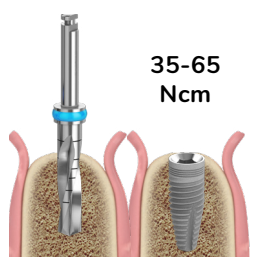
Length	Catalog Number
6 mm	Bio-CIM6006
8 mm	Bio-CIM6008
10 mm	Bio-CIM6010
11.5 mm	Bio-CIM6011
13 mm	Bio-CIM6013

Soft Bone (D3, D4)



Diameter (mm)	Ø 1.9	Ø 2.0	Ø 2.8	Ø 3.2	Ø 3.65	Ø 4.2	Ø 4.8	Ø 5.2	Ø 6.0
Drill Speed (rpm)	1200-1500	900-1200	500-700	500-700	500-700	500-700	500-700	500-700	500-700

Hard Bone (D1, D2)



Diameter (mm)	Ø 5.8	Ø 6.0
Drill Speed (rpm)	500-700	

* Recommended insertion torque 35-60 Ncm

* Procedure recommended by Biotec Implant Systems GmbH. Dental professionals should exercise their own judgment in each case.

